

This series of leaflets highlights the career opportunities in Clinical Engineering.

To find out more about Medical Physics or Clinical or Biomedical Engineering, contact us:



01904 610821



www.ipem.ac.uk



office@ipem.ac.uk

Other Clinical Engineering Careers

- Rehabilitation Engineering
- Physiological Measurement
- Radiotherapy Engineering
- Medical Device Management
- Medical Device Innovation



Find the IPEM Careers Guide here

Institute of Physics and Engineering in Medicine
Fairmount House
230 Tadcaster Road
York, YO24 1ES

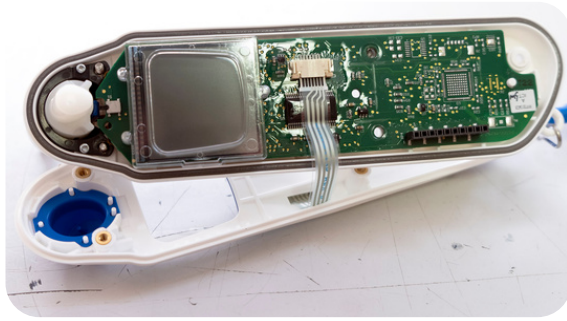
Registered in England and Wales No. 3080332
Registered Charity No. 1047999

IPEM
Institute of Physics and
Engineering in Medicine

Clinical Engineering Careers

Medical Device Management





Clinical Engineers in the NHS manage:

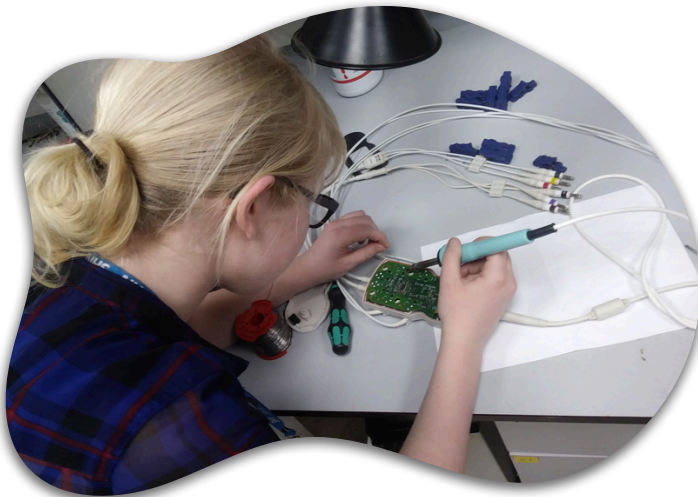
Thousands of pieces of equipment in every hospital, performing maintenance and repair.

Examples of these devices include:

- dialysis machines
- infusion pumps
- blood pressure monitors
- anaesthetic machines
- ECG machines
- defibrillators.....



Hear from some real life
Clinical Engineers here



What do we do?

- Fix and look after medical equipment so it works properly and doesn't break during use.
- Bring in new medical devices safely, including planning how they'll be used and showing staff how to use them.
- Work with doctors and nurses to make patient care better by improving equipment and how it's used.
- Help hospital staff follow the rules and laws about using medical equipment.

Electrical Safety Testing

- We test medical equipment to make sure it's safe to use.
- Some devices are used inside the body or when people are asleep, so the usual protection against electric shock isn't there.
- Sick or vulnerable patients need extra care, so we check medical equipment often and make sure it meets strict safety rules.

