

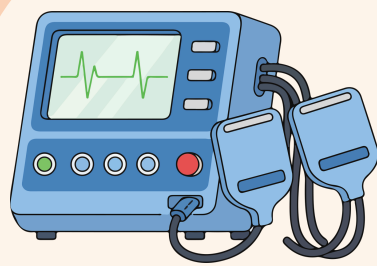
What is Clinical Engineering?



Clinical Engineering covers a wide range of roles that support the use of technology in delivering healthcare.

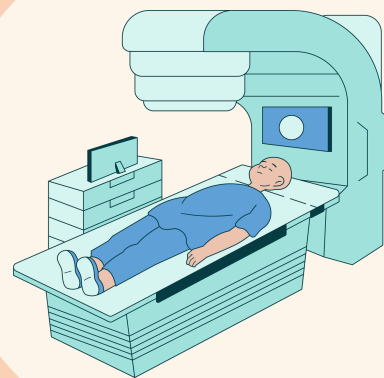
Physiological Measurement

Using technology to measure how the body works through specialist devices and results analysis



Radiotherapy Engineering

Maintaining, repairing and calibrating specialist cancer treatment machines



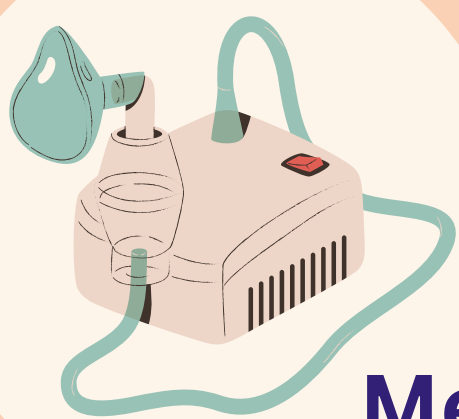
Medical Device Innovation

Creating new tools and technologies to improve patient care, treatment and lifestyle



Medical Device Management

Managing the repair and servicing of medical devices to ensure patient safety



Rehabilitation Engineering

Using science and technology to help people with disabilities live more independently

